



Jugend- und Kulturzentrum Explosiv  
Bahnhofgürtel 55A  
8020 Graz

**VENUE  
INFORMATION**  
V03-2020

## GENERAL INFORMATION

**Venue:** Jugend- und Kulturzentrum Explosiv

**Address:** Bahnhofgürtel 55A, 8020 Graz, Austria

**GPS:** 47°04'39.42"N+15°25'04"E / 47.077617, 15.417778

**Public Transportation:** Train, Tram or Bus lines to Graz Hauptbahnhof/Main Railway Station within 10min walking distance

**Web:** <http://www.explosiv.at>  
**Facebook:** <https://www.facebook.com/ExplosivGraz>  
**Twitter:** <https://twitter.com/explosivgraz>



**Audience Capacity:**

Hall	Bar Area
360 pax	160 pax

## CONTACTS

**Manager:** Philipp Weinberger  
☎ +43 676 3478024  
📄 +43 316 22503515  
✉ [management@explosiv.at](mailto:management@explosiv.at)

**Office/Booking:** Romeo Ried  
☎ +43 676 3478028  
📄 +43 316 22503515  
✉ [booking@explosiv.at](mailto:booking@explosiv.at)

**Chairwoman:** Daniela Zaunschirm  
✉ [vorstand@explosiv.at](mailto:vorstand@explosiv.at)

**Deputy Chairwoman:** Ute Koller  
✉ [Ute.k@explosiv.at](mailto:Ute.k@explosiv.at)

**Youth Work:** Philipp Weinberger  
✉ [jugend@explosiv.at](mailto:jugend@explosiv.at)

**Sound:** Alois Jilg  
✉ [tech@explosiv.at](mailto:tech@explosiv.at)

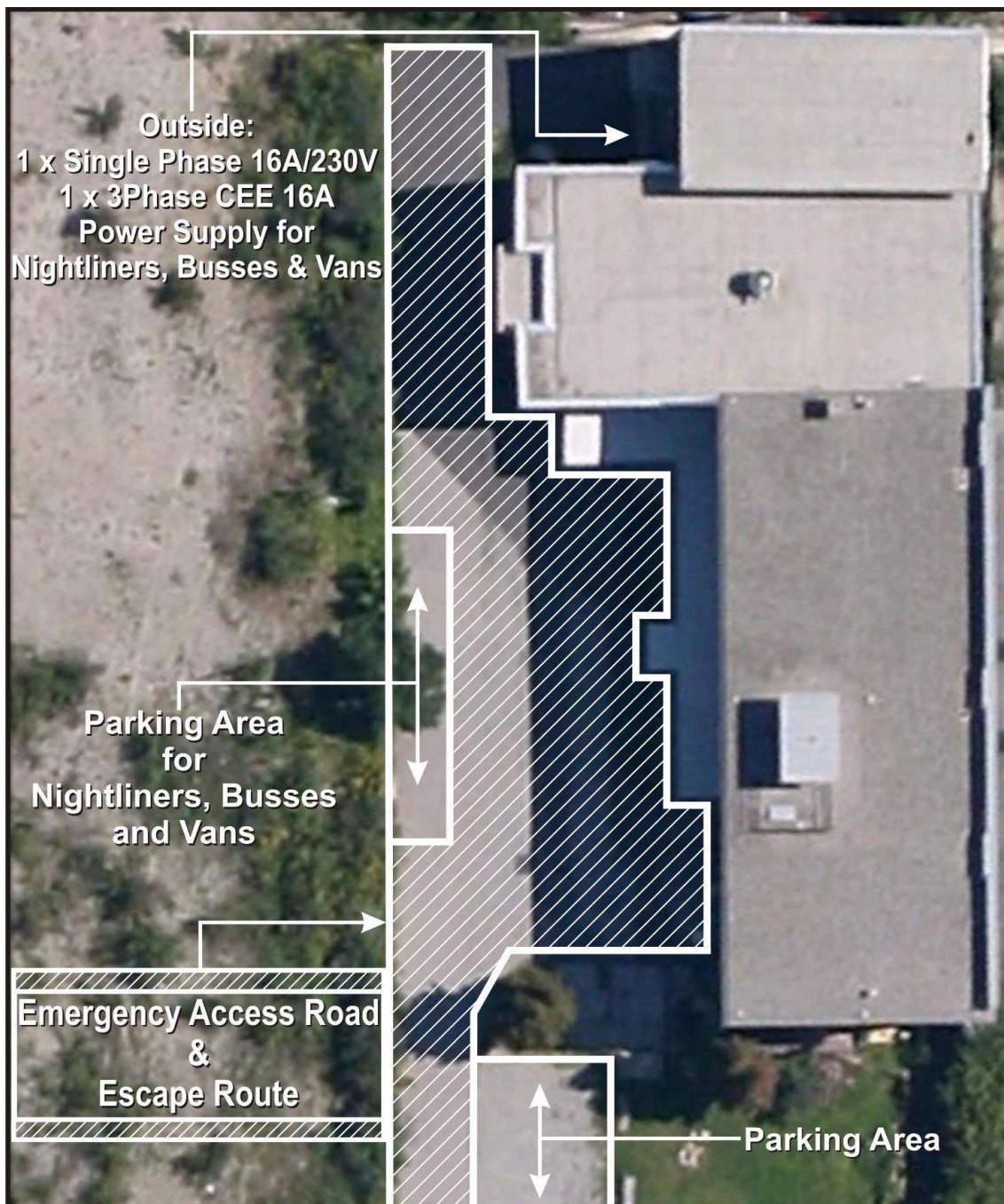
**Lights:** Lukas Neubauer  
✉ [tech@explosiv.at](mailto:tech@explosiv.at)

## FACILITY

**Private Parking Area** at the venue for Nightliners, Busses, Vans & Trailers

**Mains Power:** 230V

**Outside:** 1 x Single Phase 16A/230V, 1 x 3Phase CEE 16A Power Supply





Jugend- und Kulturzentrum Explosiv  
Bahnhofgürtel 55A  
8020 Graz

**VENUE  
INFORMATION**  
V03-2020

## STAGE

**Stage size:** 8x6x0,8m / 26,2x19,6x2,6Feet  
**Riser:** 8 Piece 2x1m / 6,5x3,2Feet (height options: 0,2-0,4-0,6-0,8m / 0,6-1,3-1,9-2,6Feet)  
**Light Rigg Level:** 5m / 14,4Feet  
**Load-In/Out:** no stairs to the stage

## BACKDROPS/SIDEDROPS/ROLLUPS - STAGE AND VENUE DECORATION

A **fire safety certificate** must be provided and handed out complying with EN 13501-1 (B-s1-d0), ÖNorm 3800 (B1-Q1-Tr1) or DIN 4102 (B1) standards. Certificates must be **valid** and provided by accredited inspection authorities. **No open fire or pyrotechnical effects.** "Special Effects" (e.g. Confetti) only after consultation and approval by the house-crew.

**!!! LEGALLY REQUIRED, NO EXCEPTIONS !!!**

## BACKSTAGE HOUSE

**Ground Floor:** 1 x Room for backline and tech. stuff - no stairs to stage  
**First Floor:** 1 x Backstage Room, 2 x Toilets, 2 x Showers, 1 x Washing Machine, 1 x Dryer  
**Second Floor:** 3 x Rooms with sleeping accommodation for 15 people

## TECHNICAL INFORMATION

For technical information and specifications regarding **sound and lights**, please contact our team at [tech@explosiv.at](mailto:tech@explosiv.at)